



Hope Funds for Cancer Research

**Press Release
For Immediate Release**

Media Contact: John Wells
media@hope-funds.org
212-769-2170

[here](#)

Hope Funds Fellow Andrew Aguirre Discusses His Research and Work In Pancreatic Cancer Treatment in New Video

For Immediate Release
Media Contact:
John A. Wells
212-769-2170
media@hope-funds.org

NEWPORT, RI -- October 17, 2018 -- Dr. Andrew Aguirre, medical oncologist and physician-scientist at Dana-Farber Cancer Institute and the Broad Institute of Harvard and MIT, discusses his work in pancreatic cancer research in a new video released by the Hope Funds for Cancer Research.

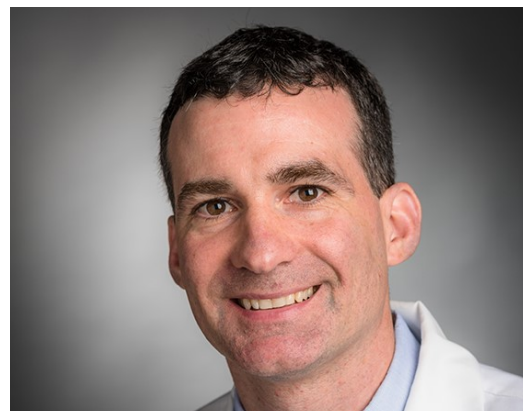
Dr. Aguirre, Hope Funds Marion Peckham Egan Fellow, directs a research laboratory focused on developing new diagnostic and treatment approaches for gastrointestinal cancers. In the video he describes his dedication to improving care for patients with pancreatic cancer and other topics.

The full five-minute video, produced by television journalist Gary Jobson, a Hope Funds Trustee, may be viewed by clicking [here](#).

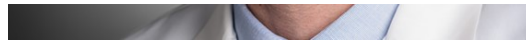
"We are delighted to share this conversation with Andy Aguirre, who is doing such important work and personifies the Hope Funds mission," said Leah Rush Cann, Chairman of the Executive Committee, Hope Funds Board of Trustees. "Dr. Aguirre is among those Hope Funds fellows who are helping make the groundbreaking discoveries that will positively impact healthcare for generations to come."

Andrew Aguirre, M.D., Ph.D.

Dr. Aguirre was an undergraduate at the University of Michigan and then earned M.D. and Ph.D. degrees from Harvard Medical School. His graduate work focused on developing mouse models of pancreatic cancer in the laboratory of Dr. Ronald DePinho. He completed a residency and chief residency in internal medicine at the Massachusetts General Hospital, and then trained in medical oncology at Dana-Farber Cancer Institute. Dr. Aguirre performed his postdoctoral studies with Dr. William Hahn and Dr. Brian Wolpin, where he focused on identifying



new therapeutic targets in pancreatic cancer and developing a personalized approach to pancreatic



cancer treatment based on studies of patient-specific tumor models. During that time, Dr. Aguirre was the recipient of a Fellowship Award from the Pancreatic Cancer Action Network. He practices medical oncology and leads an independent pancreatic cancer research laboratory at Dana-Farber Cancer Institute. He is devoted to improving treatment options for pancreatic cancer patients. (Photo: Dana-Farber Cancer Institute)

Hope Funds for Cancer Research

Hope Funds for Cancer Research was formed in 2006 to establish a funding vehicle that would take a rational scientific, medical, and investment approach to making grants for the most innovative and promising research efforts to address the most difficult-to-treat cancers, including pancreatic, lung, liver, sarcomas, esophageal, brain, gastric, renal and ovarian cancers, as well as rare leukemias, lymphomas and MDS. These cancers are insidiously aggressive illnesses that kill most of their victims within months, even with aggressive chemotherapy. The Trustees of the Hope Funds for Cancer Research believe that funding young, innovative researchers will lead to breakthroughs in these areas and increase life expectancy for those with these types of cancers. The Hope Funds for Cancer Research is a 509 (a)(1) charity under 501(c)(3) of the Internal Revenue Service's code.

For additional information about the organization, please visit www.hope-funds.org or call 401-847-3286.

Hope Funds for Cancer Research: Advancing innovative research in understudied cancers



Hope Funds for Cancer Research is an independent and unaffiliated non-profit organization

10/17/2018- 5
- End -

Hope Funds for Cancer Research, 174 Bellevue Avenue, Suite 208, Newport, RI 02840

[SafeUnsubscribe™ {recipient's email}](#)

[Forward email](#) | [Update Profile](#) | [About our service provider](#)

Sent by media@hope-funds.org in collaboration with

Constant Contact® 

Try it free today